

The Glades House & Land Packages



Image for illustration purposes only

From \$367,658

Lot 2365 Tourmaline Blvd



For more information please contact:

Dave Whitlock on 0439 933 805 or
dave.whitlock@contentliving.com.au



- Land sqm: 375m Frontage: 12.5m
- Family home with High ceilings throughout, Huge scullery, 4 beds, Home theatre, IT Nook, Double garage, Sliding robes to minor beds. 1200 Entry door, 900mm Cooking appliances
- Essastone tops throughout (Kitchen/Scullery, Bathroom, Ensuite), Glass splash-backs to kitchen, Scullery & Laundry. Choice of 3 rendered elevations
- Great location stroll to new Primary School and parklands in a premium estate. Enjoy everything this estate has to offer.
- Build with confidence, Build with Content, WA'S largest independent builder 3rd largest overall. 1 of only 2 Quality Assured building companies
- Site works included
- Feature Elevation to comply with Developer Requirements
- Side and rear fencing
- Ecological front landscaping

Sales Office Hours:

9am to 5pm Monday to Friday
10am to 5pm Saturday
1pm to 5pm Sunday
1pm to 5pm Public holidays

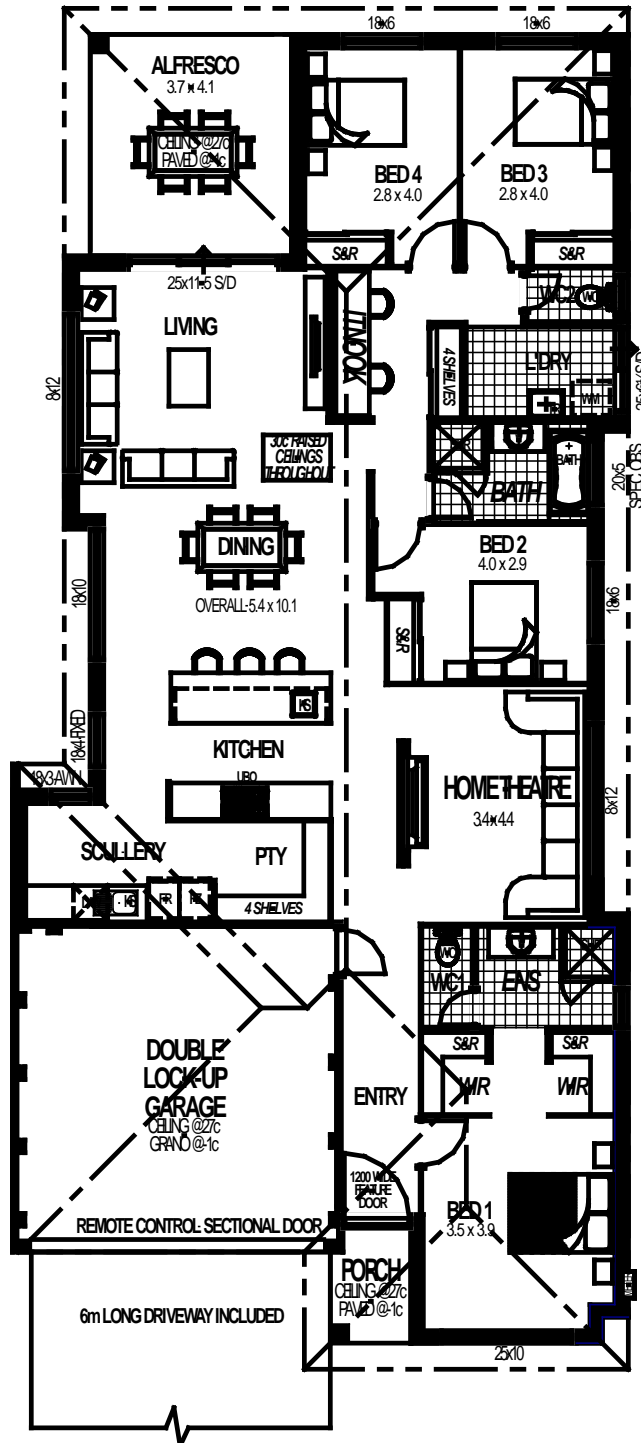
e byford@lwpproperty.com.au
a 2 Doley Road, Byford
t 08 9297 9934
w byford.com.au



Join LWP Advantage today & enjoy
up to \$24,000 worth of benefits.



The Glades House & Land Packages



Sales Office Hours:

9am to 5pm Monday to Friday
10am to 5pm Saturday
1pm to 5pm Sunday
1pm to 5pm Public holidays

e byford@lwpproperty.com.au
a 2 Doley Road, Byford
t 08 9297 9934
w byford.com.au

LWP
ADVANTAGE

Join LWP Advantage today & enjoy
up to \$24,000 worth of benefits.

the
glades
AT BYFORD